



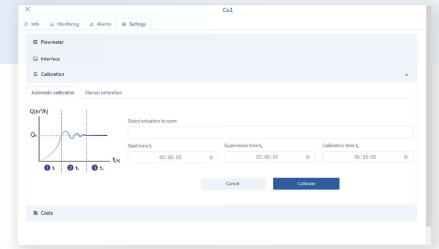
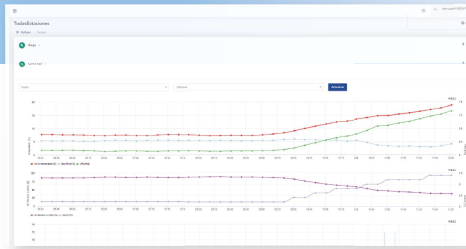
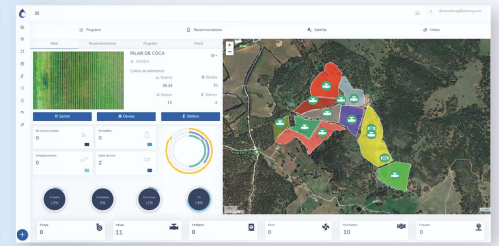
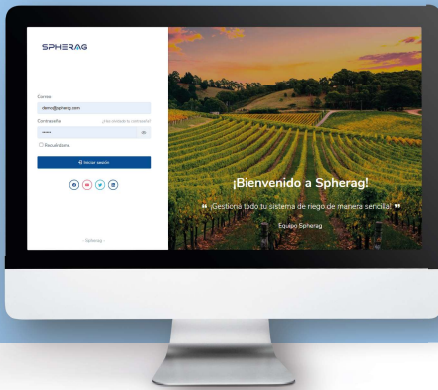
SPHERAG is committed to responsible water consumption and cost savings for our customers. Our ATLAS devices incorporate digital inputs that can be connected to any flowmeter with a pulse emitter.



Due to the dimensions of the equipment, the energy self-supply and the integrated communication network, it can be easily installed at any point and in a few minutes.



Once installed and configured, you can check with just one click, in real time, the total consumption of each flowmeter, its associated cost expressed in the configured currency, the consumption of the last 24 hours and the instantaneous flow rate.



Data control

Analysis and investigation of consumption patterns, and comparisons with other time periods. Graphs of total consumption, eventual daily, weekly, monthly and annual consumption; a flow graph and a cost graph.

Export

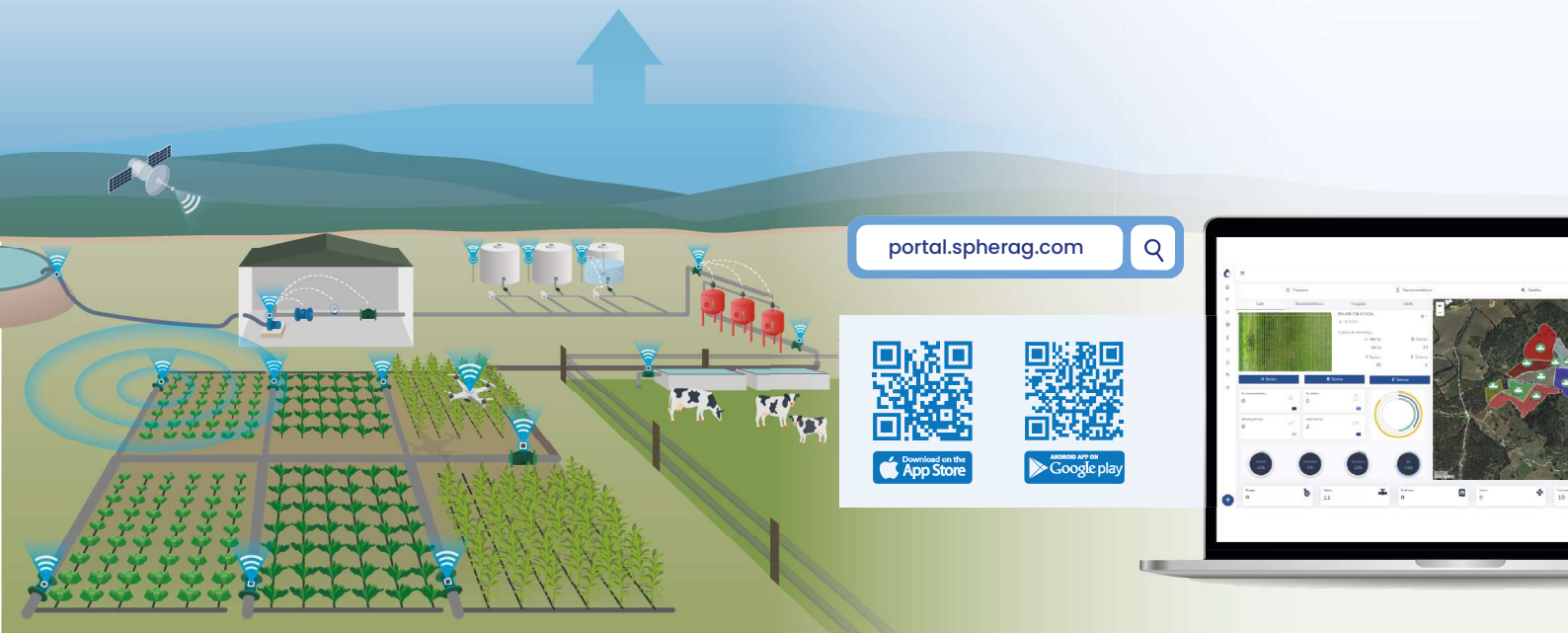
Exporting data to Excel or .csv files makes it easy for users to create their own reports, cost analysis and quantify savings after flowmeters digitization.

Recalibration

In many agricultural installations the nominal flow rate of the line is not reached until the pipe is completely filled. For this reason Spherag offers the possibility to customize alerts based on the nominal flow rate once the stationary mode is reached.

Alert control

SPHERAG technology allows the programming of both pressure and flow rate alerts. These alerts can either simply report a deviation, or report and act on the installation so that the affected devices interrupt their activity.



portal.spherag.com

